

PET CLOSURE

6n Injection Molded Solution to Enable the Circular Economy

Michael White

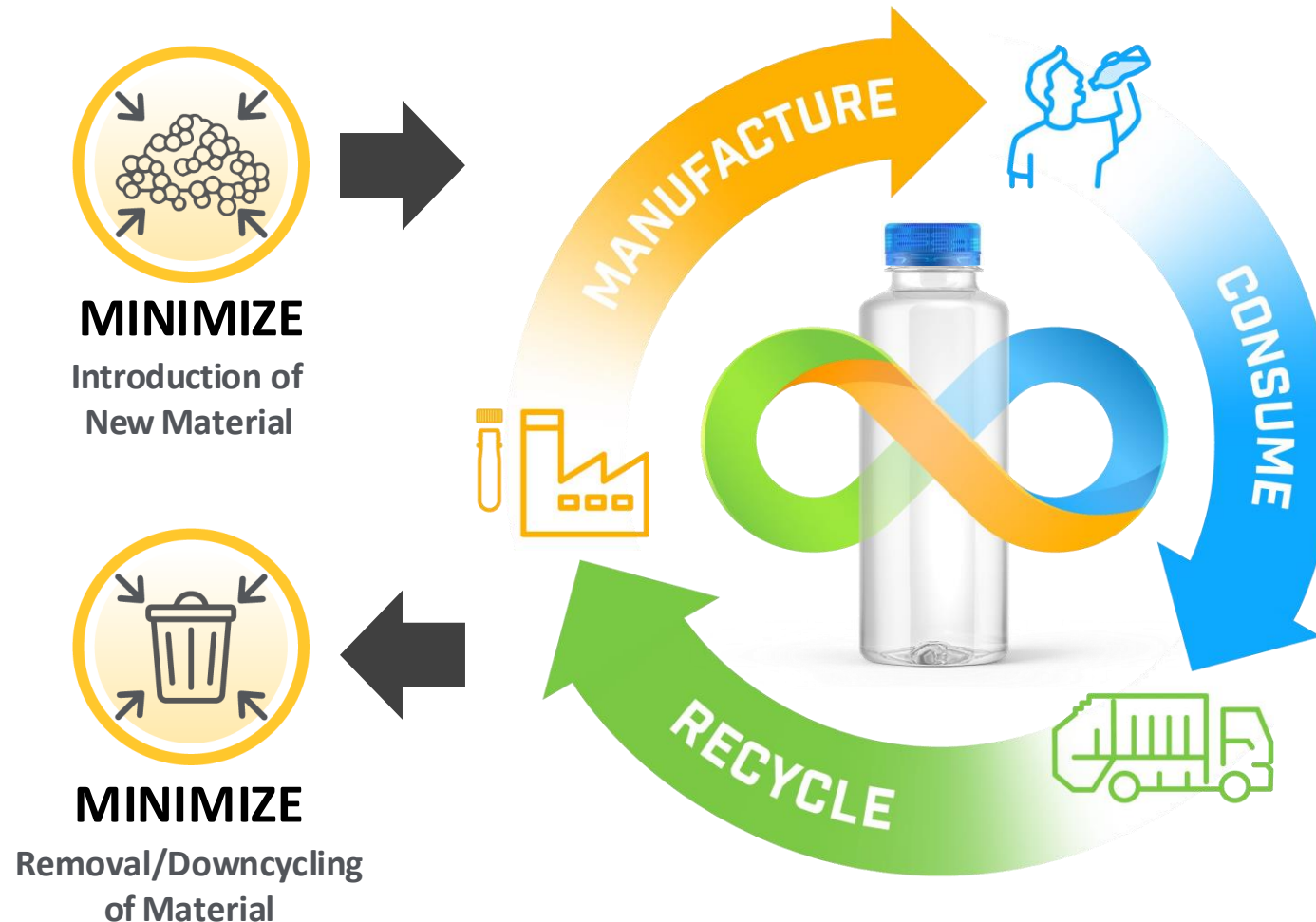
mwhite@husky.ca

HUSKY CONTROLLED. HUSKY INFORMATION IS ONLY INTENDED FOR THE RECIPIENT.
ANY DISSEMINATION TO ANYONE OTHER THAN THE RECIPIENT IS UNAUTHORIZED AND STRICTLY PROHIBITED.



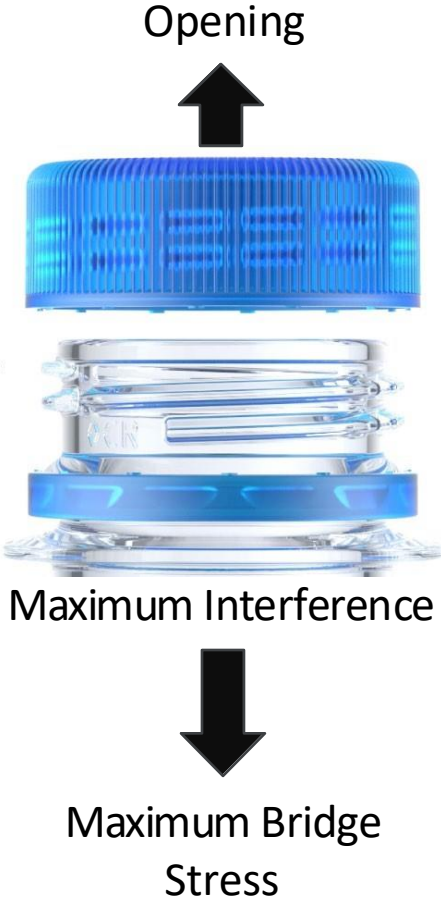
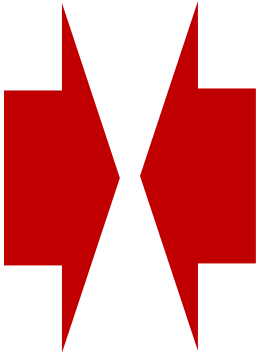
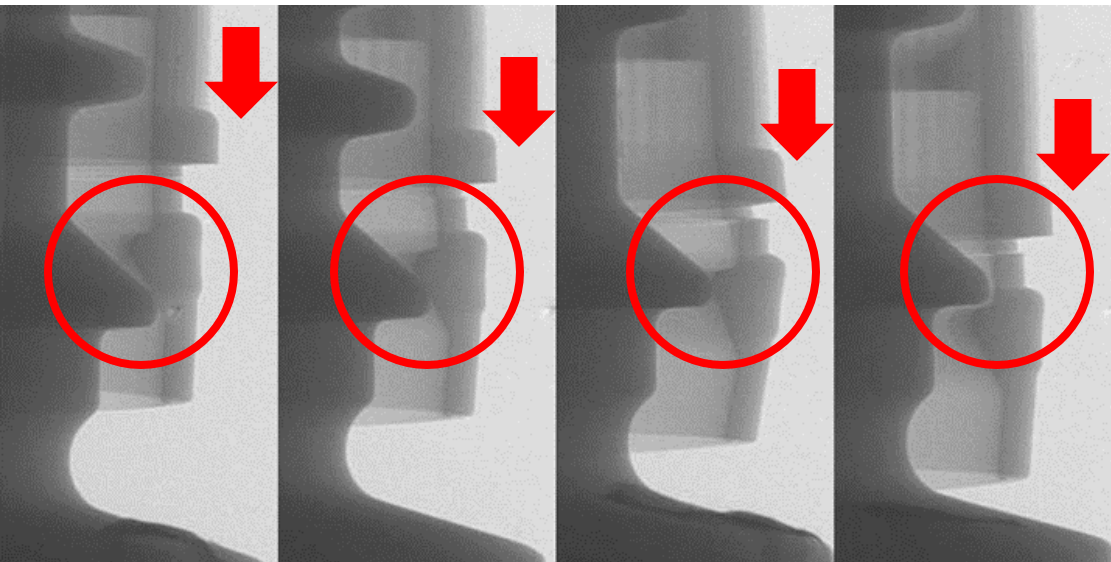
ENABLING THE CIRCULAR ECONOMY

PET MOST RECYCLED RESIN ON PLANET

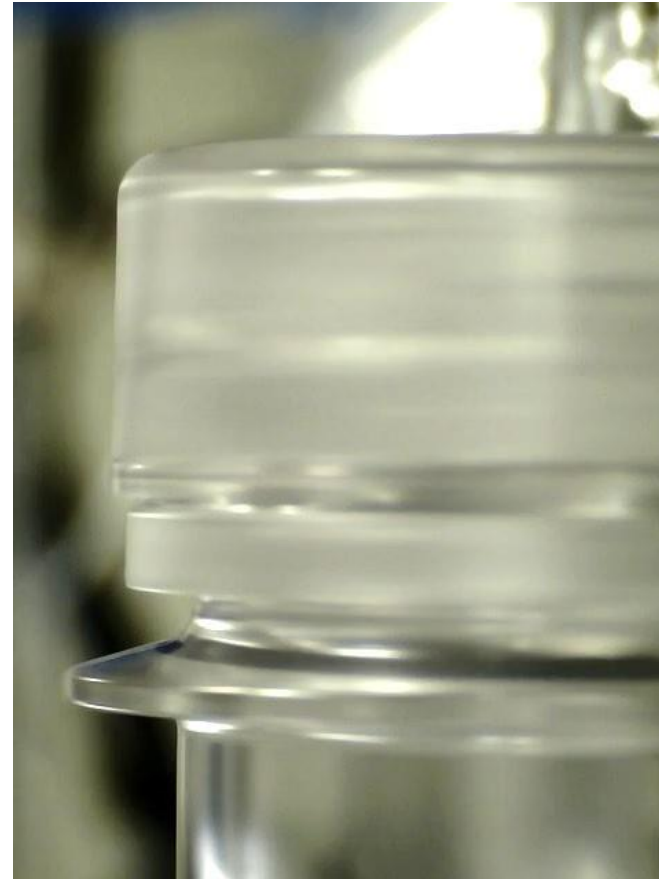


T6MPER EVIDENCE CONTRADICTION

Elasticity of HDPE vs PET

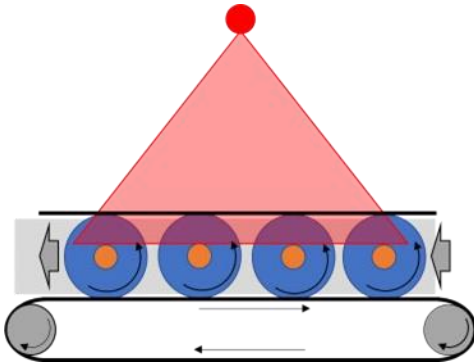


HOW IT WORKS



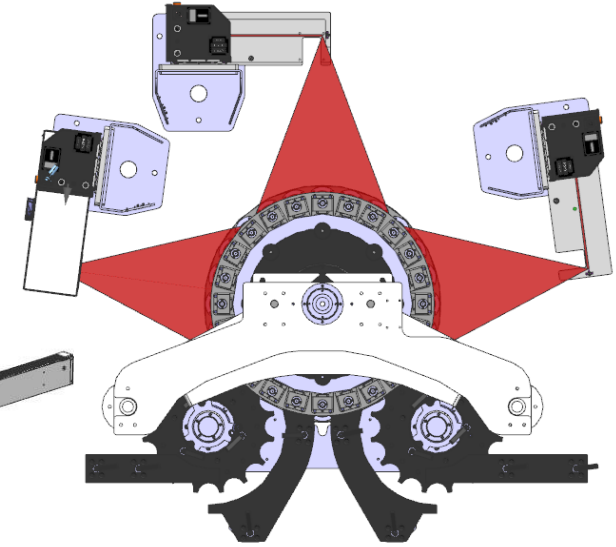
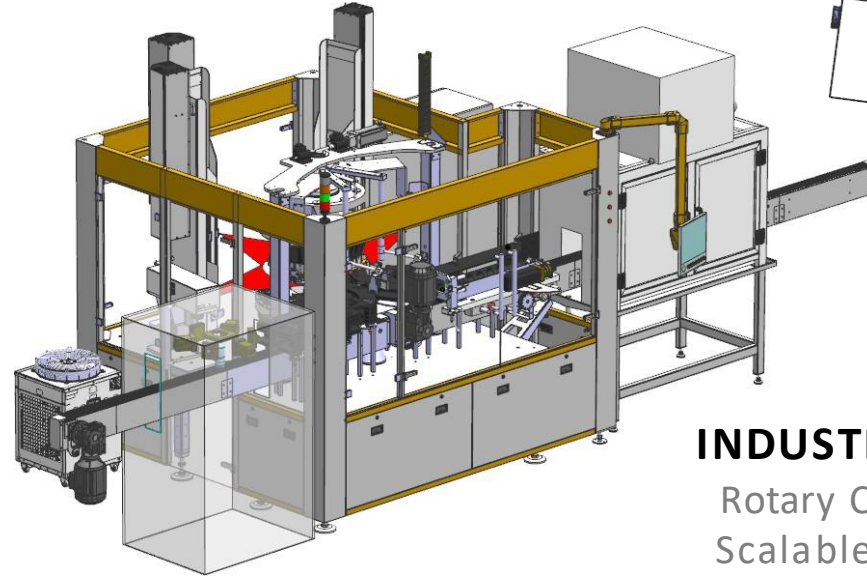
HOW TO ACHIEVE TEMPER EVIDENCE?

TE FORMER - IN LINE @ END OF CAPPING



PROTOTYPE

Linear Conveying (15K bph)



INDUSTRIALIZED SYSTEM

Rotary Conveying (45K bph)
Scalable | Match Fill Speeds



THIS IS A VIDEO
~1min in duration

RO6DM6P
6 PH6SED 6PPRO6CH



NCB – NP



NCB – P (N₂)



AS/HF



CSD

APPLICATIONS

COMMENTS	✓	NITROGEN Dosing	INCLUDING CAPDIS / B180	MOST CHALLENGING Sealing Venting
TARGET TIMING	Early Adopter Phase	H2 2025	>2025	>2025

PET M6TERI6J PROPERTIES

RIGIDITY UNLOCKS NEW LIGHT-WEIGHTING OPPORTUNITIES

29/25 GME30.26
(HDPE CAP)



3x 180°

29/25 GME30.26
(PET CAP)



12.6mm

3x 100°

Less Thread Engagement Required



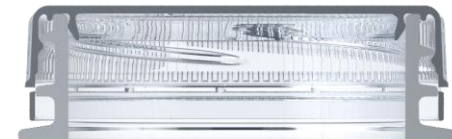
-3mm



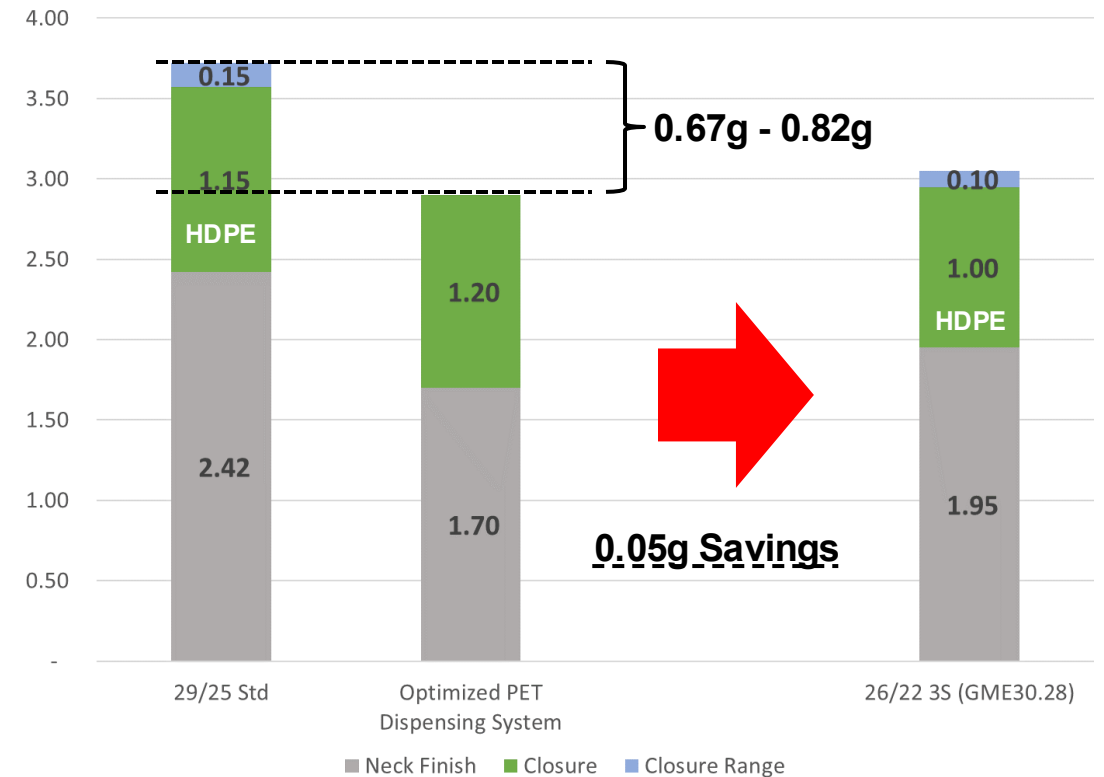
9.6mm



3.57g



2.90g



OBVIOUS TEMPER EVIDENCE CONFIRM BEHAVIOR DURING REMOVAL



Audible click as bridges break



Tactile response



Visual cue (fractured bridges/band drop)



ENABLING THE CIRCULAR ECONOMY

BENEFITS vs HDPE/PP



YIELD IMPROVEMENTS

PET Bale
Same Material as Bottle



SHELF

Appeal



STRESS-FREE

Application (no cams)
Lower Reject Rate



LIGHT-WEIGHTING

Opportunities
(Dispensing System)



IMPROVED

Barrier Performance
O₂ Permeation level -14x Better
CO₂ Permeation level – 8x Better



SECURITY

An ultra secure TE system



Permeation Rates Comparison <https://static.thermoscientific.com/images/D2082C~.pdf>

HUSKY CONTROLLED. HUSKY INFORMATION IS ONLY INTENDED FOR THE RECIPIENT.
ANY DISSEMINATION TO ANYONE OTHER THAN THE RECIPIENT IS UNAUTHORIZED AND STRICTLY PROHIBITED.

HOW DOES IT PERFORM?



TAMPER EVIDENCE
Unmatched vs Current



Cetie



BOTTLE DROP
@1.4m 500mL



Cetie



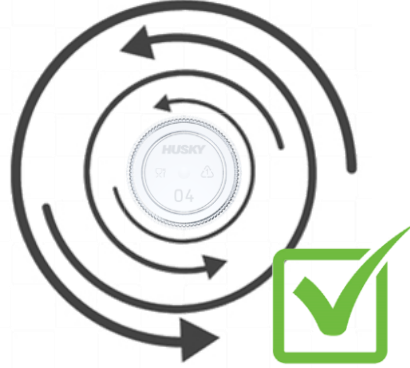
SST (SEALING)
No leaks 25psi | No blow off 40psi



APPLICATION ANGLE
100° vs 180°



STRIP TORQUE
Noticeably higher
(>22in/lbs)



REMOVAL TORQUE
9-18in/lbs
Adj. Preload | Slip
Reduce Contact Surfaces

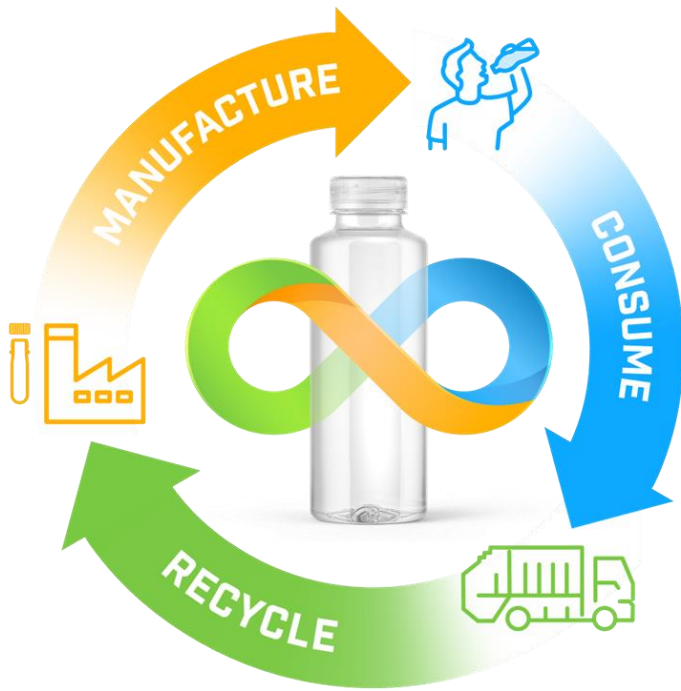


CAPPING
Repeatable C stress-free



COMPLIANCE
SUP Directive (EU) 2019/904
25N | 15x

PRESERVE | PROTECT | DIFFERENTIATE



PRESERVE

“Sustainability is a license to operate”



TAMPER EVIDENCE

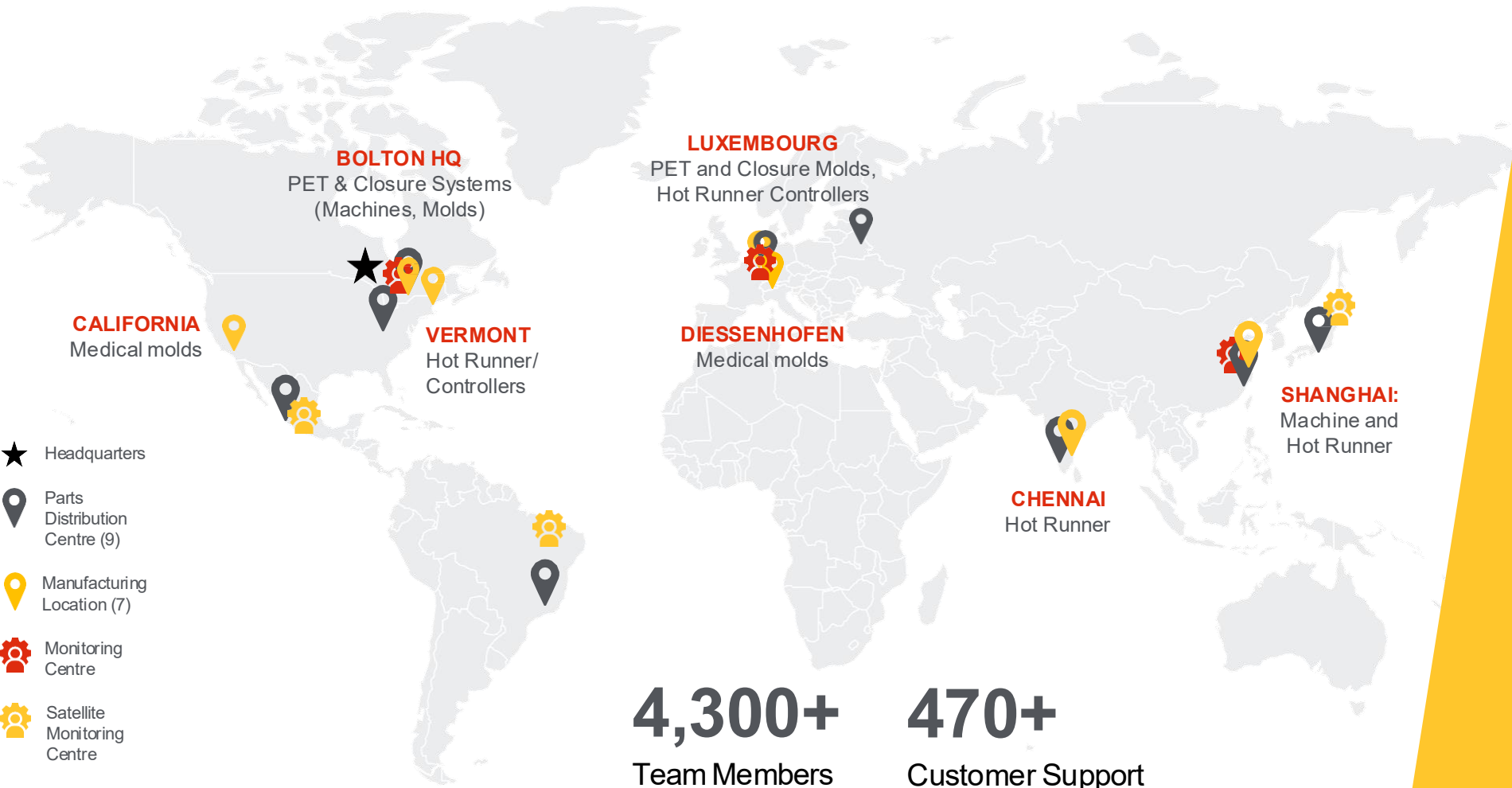
Industry's most secure TE system



DIFFERENTIATION

Glass-like properties | Premium Look

GLOBAL REACH LOCAL PRESENCE



HUSKY TECHNOLOGIES INJECTION SOLUTIONS PROVIDER

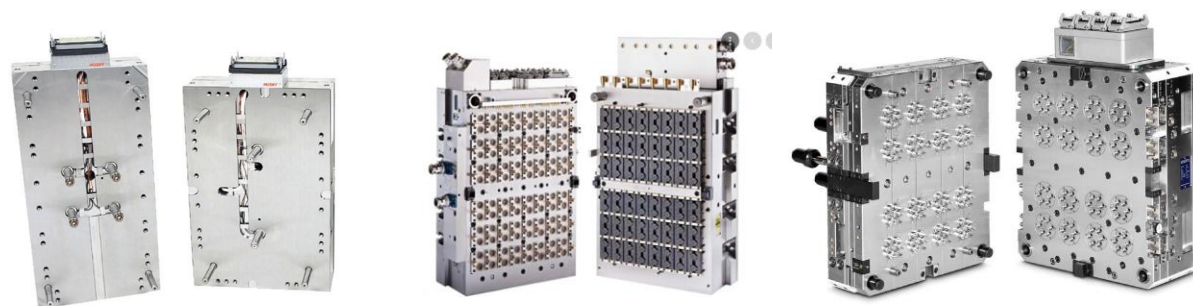


SYSTEMS

Closures
PET Preform
Medical



TOOLING



HOT
RUNNERS

CLOSURE | PREFORM | MEDIC61
MOLDS

SERVICE

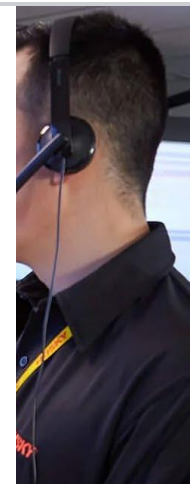
HUSKY

Advantage+Elite™

WE CALL YOU

COMMITMENT

Made, Delivered, and Maintained™





Connect with us at the show!

drinktec

15 - 19 September 2025

Trade Fair Center Messe München

PET CLOSURE

6n Injection Molded Solution to
Enable the Circular Economy

Michael White

mwhite@husky.ca

HUSKY CONTROLLED. HUSKY INFORMATION IS ONLY INTENDED FOR THE RECIPIENT.
ANY DISSEMINATION TO ANYONE OTHER THAN THE RECIPIENT IS UNAUTHORIZED AND STRICTLY PROHIBITED.

